

# RIVERTON PRIMARY SCHOOL

## BEING THE BEST AT GETTING BETTER

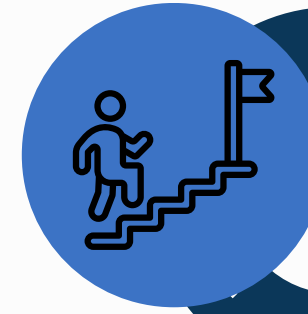


THE SKY'S THE LIMIT



### Deep focus on Resilience and Persistence

- Our learners have the skills and capacity to cope with challenges and persevere with new or complex learning situations



### Cognitive Engagement

- providing our learners with the mental capabilities to engage actively in learning and feel stretched and challenged



### Promote a Culture of Improvement School Belonging

- Create a supportive and safe learning environment
- High expectations for all (collective responsibility for improved practice and student learning)
- Maintain/ Embed and nurture a culture of learning
- Foster connection through community partnerships



### Community Partnerships

- Build strong relationships and connections between school and home. Providing positive, caring and mutually respectful partnerships.
- Clear roles and responsibilities
- Active planning and progress monitoring.
- Form strong connections to community to enhance learning and learners.

### Use data and evidence to impact learning (cycles of inquiry)

- Continuously monitor progress towards goals.
- School wide approach analysing diverse data sources that inform teaching
- Adjusting strategies and practices as required.



### Enact evidence informed Pedagogical practices

- Maintain clear expectations for the use of evidence informed teaching in all classrooms
- Goal setting for high expectations, with learners knowing, understanding, doing
- Effective Learners - Curiosity, Creativity, Meaning Making and Strategic Awareness

